



OWNER'S MANUAL

COMPACT AUTOMATIK SERIES



IMPORTANT SAFETY INSTRUCTIONS

When using an electronic appliance, basic safety precautions should always be followed. Read all guidelines before operating the unit.

To reduce risk of fire, electric discharges or injuries:

- Use this vacuum only for its intended use as described in this manual. (Use of attachments not recommended by the manufacturer may cause fire, electric shock, injury or damage to system components.)
- Do not allow vacuum to be used as a toy. Close supervision is necessary when this vacuum is used by or near children.
- Do not leave the unit running without any supervising. Disconnect the unit if it is not used and before maintenance.
- Do not pick up anything that is burning or smoking, such as cigarettes, matches, or hot ashes.
- Do not pick up any flammable liquids or combustible materials (gasoline, fuel, diesel) hot debris, waste solvents (paint or other), explosive materials that would cause harm to the vacuum cleaner.
- Do not vacuum drywall dust or baking flour as it may cause damage to your vacuum.
- Avoid picking up hard or sharp objects to prevent damaging or block the hose and the plastic pipes.
- Do not put any object into openings. Do not use with any opening blocked. Keep free of dust, lint, hair and anything that may reduce airflow/suction. Lack of air flow will cause the motor to overheat.
- This vacuum cleaner creates suction. Keep hair, face, fingers, all body parts and loose clothing away from any openings.
- If the power cord is damaged, it must be replaced by a special cord available from the authorized local dealer/distributor.
- Do not use extension cords or outlets with inadequate current carry capacity.
- Never operate this vacuum if it has a damaged cord or plug, if it is not working properly, or if it has been dropped or damaged. Return to authorized dealers/distributor for repairs.
- Never disconnect plug by pulling cord. To disconnect from the outlet, grasp the plug, not the cord.
- Do not locate the power unit in a high temperature area or where it is inaccessible, for example, an attic or crawl space.
- Never handle plug, cord or power units with wet hands.
- Connect to a properly grounded (earthed) outlet only. See grounding (earthing) instructions.
- Keep cord away from heated surfaces.
- Turn off all controls before unplugging.
- Unplug electrical appliances before vacuuming them.
- Hoses with electrical connections must not be used if damaged.

By overlooking safety rules, you might risk putting your health in danger and to those who surround you!

Drainvac International disclaims any responsibility should you infringe upon these guidelines.

SAVE THESE INSTRUCTIONS

INTRODUCTION

We wish to thank you for your trust and congratulate you for having chosen a Drainvac product. It is a sound investment that will satisfy your vacuuming needs for years to come. The concept of Drainvac’s Automatik central vacuum cleaners is unique and patented. They are manufactured and checked at our plant by our qualified staff who have been specifically trained to this end. A number of installations and operating methods must be followed to ensure your system’s maximum performance and to avoid unnecessary service calls. Please read this manual carefully.

REGISTRATION

First off, we recommend you to fill out this form before you start the installation process. If you have any concerns or problems you may encounter, please contact the nearest retailer. The unit’s profile will be required.

Model*: _____

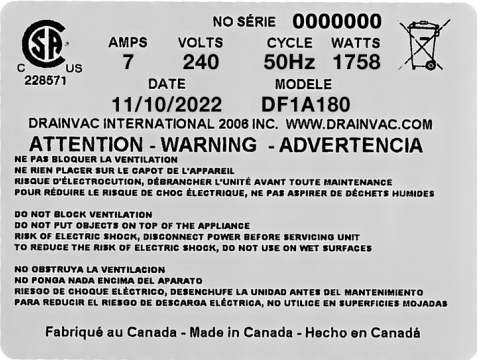
Serial number*: _____

Retailer name: _____

Date of purchase: _____

Date of the last maintenance: _____

*This information is found on a metal tag located on the left side of the unit.



Metal tag

TABLE OF CONTENTS

HOW THE SYSTEM WORKS

 OPERATION SEQUENCE / GENERAL INFORMATION 6-7

 STARTUP / LIQUID PICK-UPS / BEFORE STORING AWAY 8

TYPE OF UNITS (TECHNICAL SPECIFICATIONS)..... 9

UNIT DESCRIPTION..... 10

HOW THE MEMBRANE WORKS 11

HOUR METER..... 12

INSTALLING THE UNIT

 FIRST THINGS FIRST..... 12-13

 STEP SEQUENCE 14-17

INSTALLING THE PIPING SYSTEM

 GENERAL INFORMATION 18

 DIFFERENT INSTALLATION POSSIBILITIES (RESIDENTIAL AND COMMERCIAL INSTALLATION) 19

 FROM DRY TO WET 20

 EXAMPLES OF PROPER AND IMPROPER INSTALLATIONS 21-23

ELECTRICAL POWER SUPPLY

 PROCEDURE / EXAMPLES OF PROPER AND IMPROPER INSTALLATIONS 24

 DIAGRAMS OF AN APPROPRIATE CONNECTION 25

 GROUNDING INSTRUCTIONS..... 26

MAINTENANCE PROCEDURES

 VISUAL INSPECTION / REGULAR MAINTENANCE..... 27

 DECANTER / MOTOR BRUSHES 28

WEEE GUIDELINES 28

TECHNICAL PROBLEMS / SUPPORT 29

ANNEX

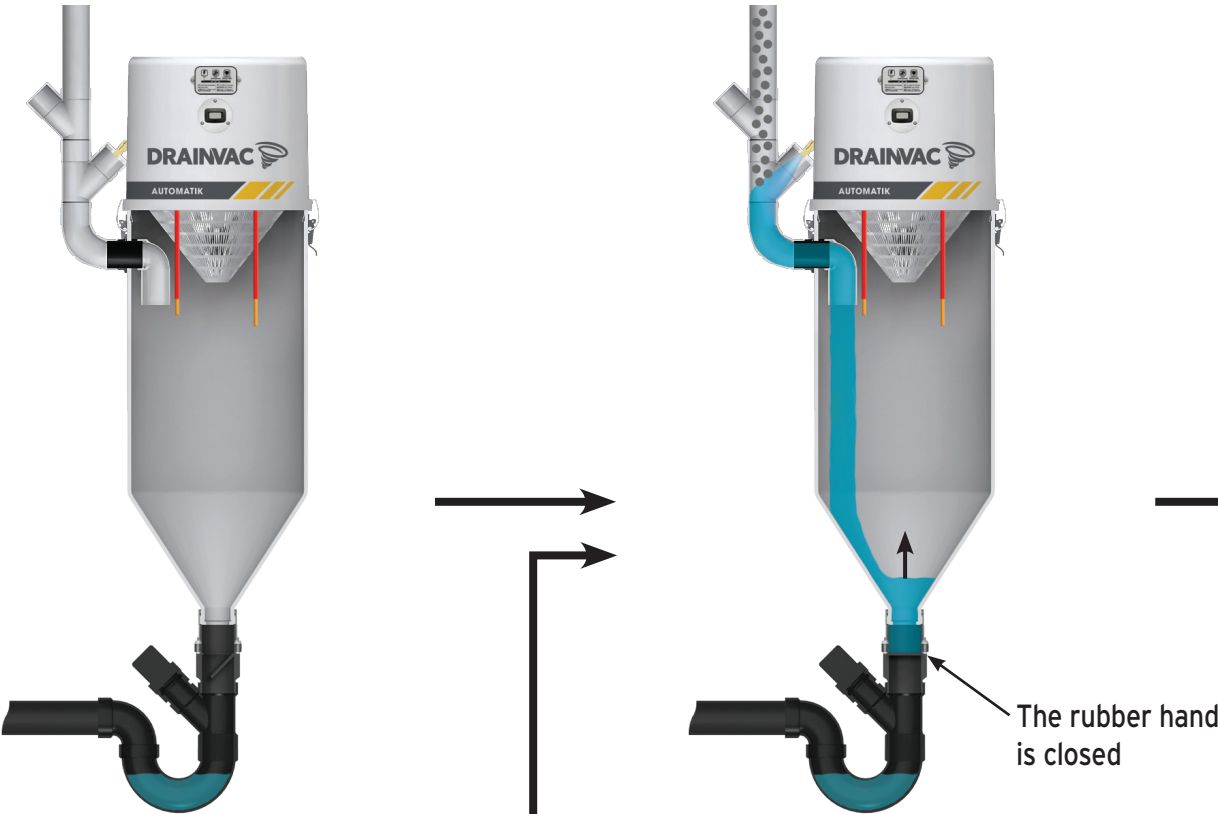
HOW THE SYSTEM WORKS

Drainvac Automatik central systems are designed to vacuum both solids and liquids. The canister never needs to be emptied manually since the wastewater is automatically evacuated through the building's drainpipe or can be redirected to a nearby floor drain.



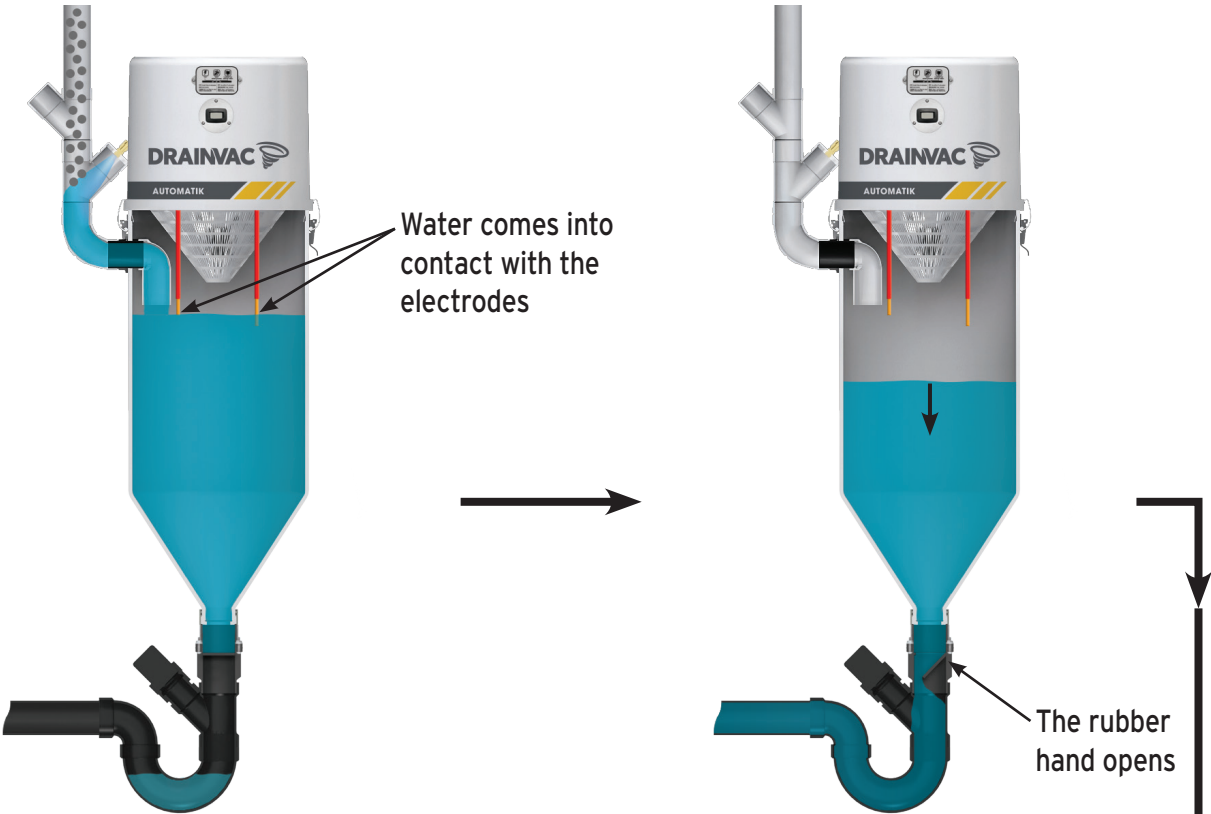
OPERATION SEQUENCE

Watch the video sequence!



Step 1
Unit is off.

Step 2
Start up: The dirt begins to be vacuumed and water flows in.



Step 3
Water flows in, reaching the electrodes (approx. 10 minutes).

Step 4
The wastewater is evacuated (approx. 20 seconds).

HOW THE SYSTEM WORKS

The sensitivity of the electrodes can be modified by the printed circuit board. See Annex for more information.

GENERAL INFORMATION

As you are cleaning, the vacuum unit gradually fills up and comes to an automatic stop once water reaches the electrodes. While the system is stopped, the vacuumed content is being evacuated from the unit. This can take a few seconds before the system starts back again (refer to page 6 and 7).

NOTICE: Disconnecting the hose from the wall inlet stops the system, which opens the rubber hand and empties the unit's content.

HOW TO USE THE SYSTEM

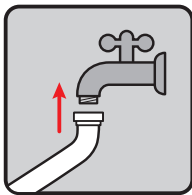
STARTUP

As you connect the hose to the wall inlet or manually turn on the unit, the Automatik system **starts up in a progressive manner**. The soft start feature protects the electrical pannel from sudden high tension. At the same time, **water starts to flow in** from the water jets located in the air inlet of the unit.

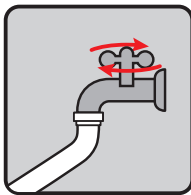
LIQUID PICK-UPS

Instead of the regular floor brush, use a tool specially designed to vacuum liquids.

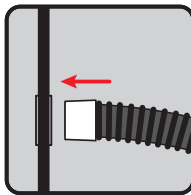
If you are using a cleaning kit equipped with jets:



Connect the water hose from, either the cleaning tool or cleaning wand, to the faucet.



Open the faucet, use preferably warm water.



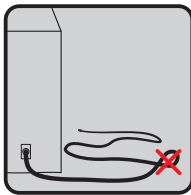
Connect the hose into the wall inlet.

BEFORE STORING AWAY

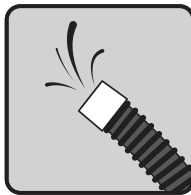
Cleaning wet surfaces dirties the inside of the hose. It is therefore necessary to clean them before storing away the equipment. The following procedures eliminates any leftover liquids and prevents unwanted leaks when disconnecting the hose. Ignoring these steps might leave you with a bad stench, mould accumulation and even a clogged hose.



Vacuum 2 gallons of clear water



Fully extend the hose and undo any loops



Keep the unit running for a few minutes as it dries out
Optional: vacuum toilet paper to accelerate drying process.

TYPE OF UNITS

You have purchased one of the following models. Identify the one related to it. **The model number is marked on the label stuck on the left side of the head.**



FICHE TECHNIQUE

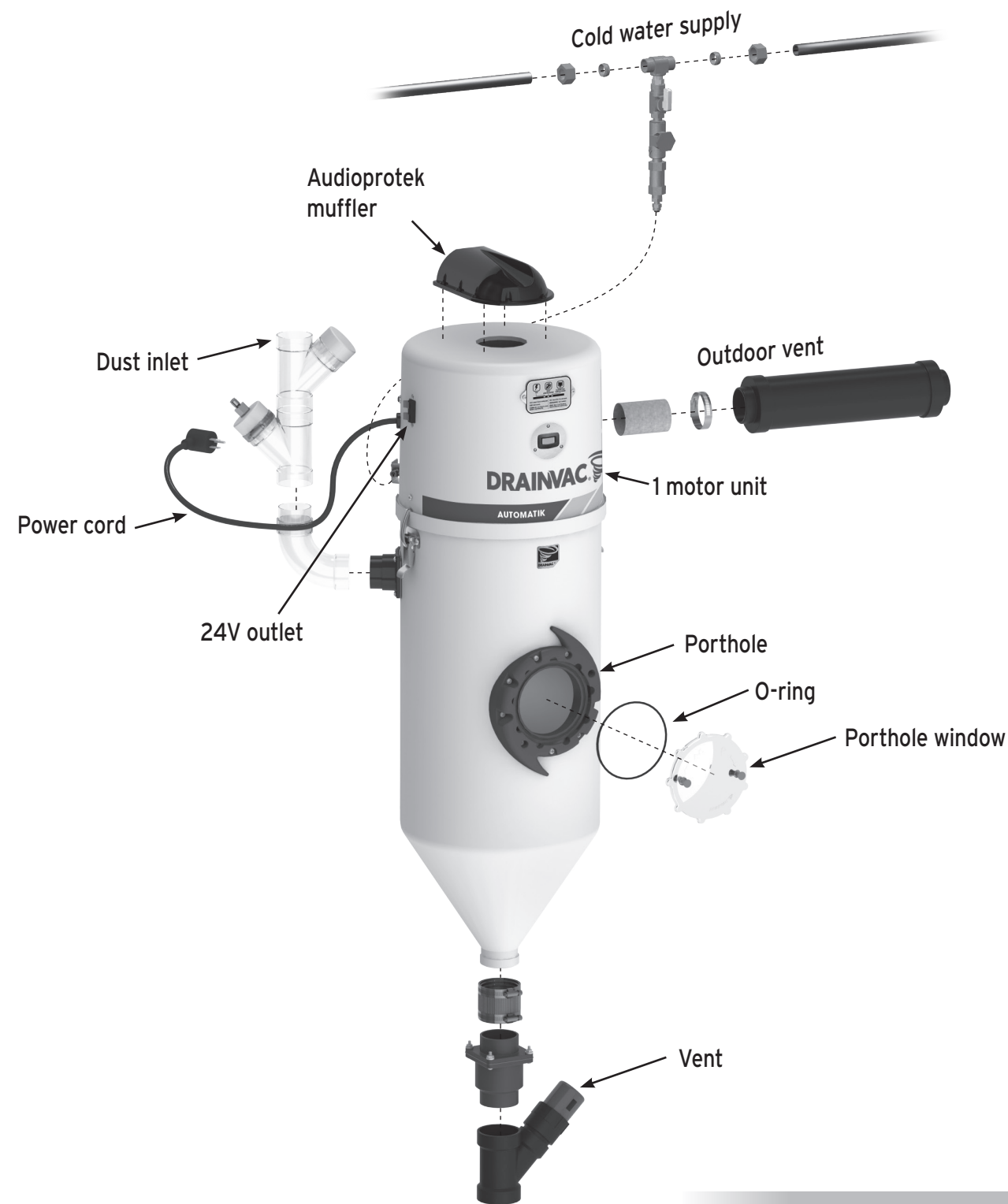
AMÉRIQUE DU NORD (108V - 120V)

MODELS	AIR WATTS	H ₂ O	CFM	dB	MOTOR	AMPS.	CAPACITY	FLOW RATE / MIN.	DIMENSIONS
DV1A180	2.4	143	124	66	1	13.5	7 gal. / (32 L)	0.6 gal. (2.3 L)	12" dia. x 40" (33 cm dia. x 102 cm)

INTERNATIONAL (220V - 240V)

MODELS	HP	mmH ₂ O	m ³ /h	dB	MOTOR	AMPS	CAPACITY	FLOW RATE / MIN.	DIMENSIONS
DF1A180	2.4	3700	212	66	1	8.1	7 gal. / (32 L)	0.6 gal. (2.3 L)	12" dia. x 40" (33 cm dia. x 102 cm)

UNIT DESCRIPTION



DV1A180 / DF1A180

HOW THE MEMBRANE WORKS

As illustrated on pages 6 and 7 of this manual, the Automatik system evacuates wastewater automatically after approximately 8 to 10 minutes. Keep in mind that as long as the system is operating, water keeps flowing and the unit eventually fills up. The membrane allows you to adjust the time lapse during which the unit deactivates and empty its contents. The unit also clears out the wastewater once the unit stops.

WHY CHANGE THIS PARAMETER?

- With the decanter configuration, the unit can reactivate as soon as there is no wastewater left to flow through the rubber hand (in other words when all the wastewater is in the separate funnel).
- If the unit's drain is located very close to the pipe leading to the sewer and that there is less restriction to the amount of wastewater that can be evacuated, the evacuation time could be set on medium.
- On the other hand, if the diameter of the pipe leading to the sewer is smaller and restrains the amount of water that can be evacuated, increasing the evacuation time to a long flushing time could be necessary.

TEST

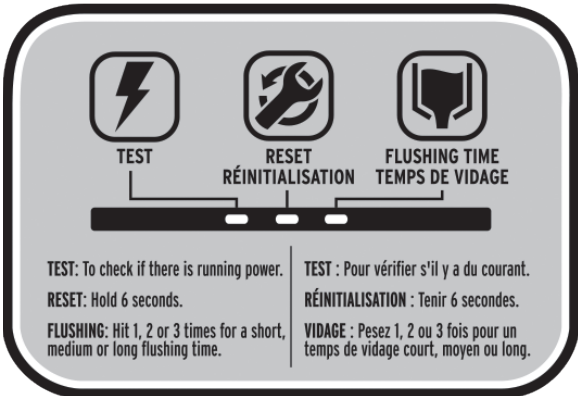
The first LED will light up when the unit is plugged in, indicating that there is power. By pressing the TEST button, the unit starts up. Press a second time to turn off the unit. In case of troubleshooting, this button allows you to check the unit's status independently from the 24V electrical network.

RESET

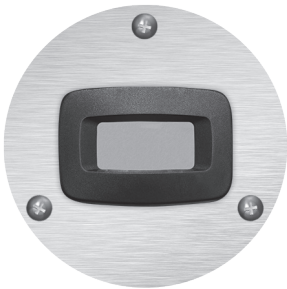
The middle LED will light up after 500 hours of usage. This means maintenance is required and the unit should be taken to a Drainvac retailer to be examined. Maintenance should only be reset by a qualified Drainvac technician.

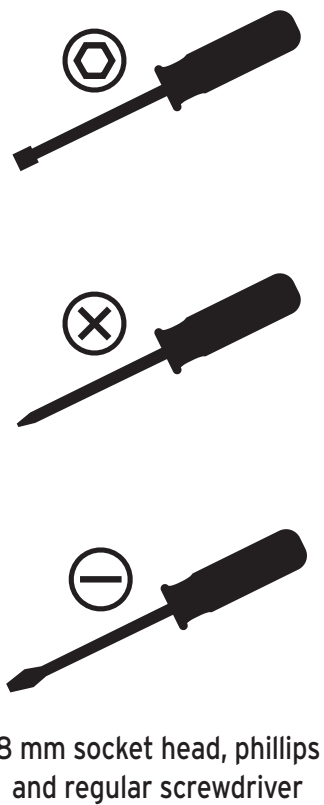
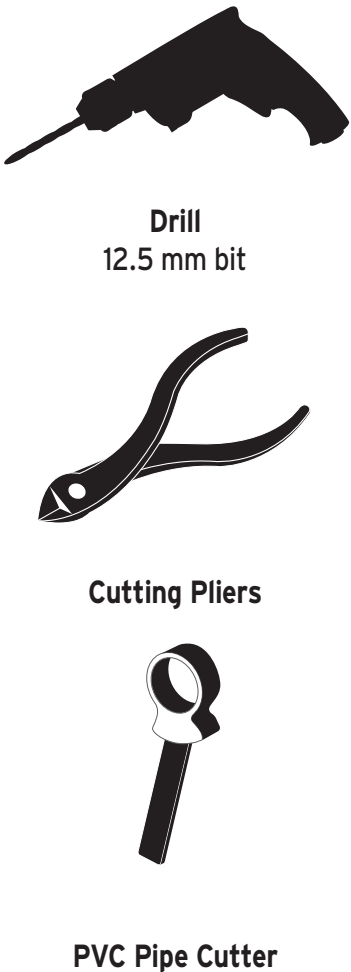
FLUSHING TIME

- Press once to initiate short flushing time - LED will flash once.
To be used if the unit is connected to big drainpipes (3 inches or more) and the medium flushing time is unnecessarily long.
- Press twice to initiate medium flushing time - LED will flash twice.
It's the configuration programed by default.
- Press three times to initiate long flushing time - LED will flash three times.
To be used if the unit is connected to small drainpipes and more time is necessary to let the wastewater evacuate through the drain.



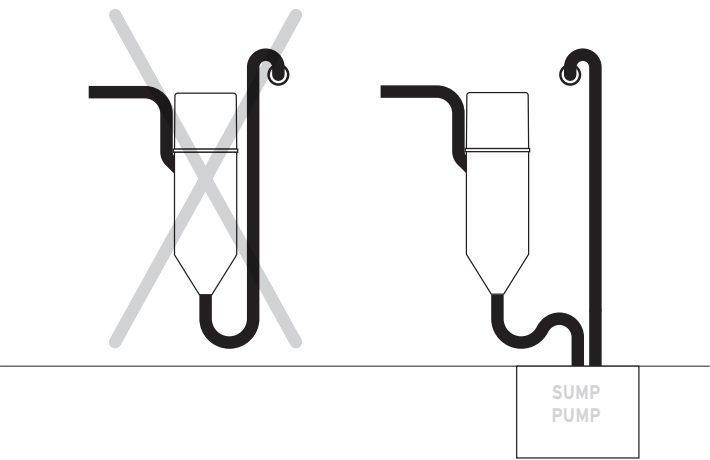
The commercial models of the Automatik series are equipped with an hour meter that indicates the length of time the unit has been running. When the unit reaches the 500-hour mark, it is strongly recommended to contact your Drainvac representative or retailer for maintenance purposes.



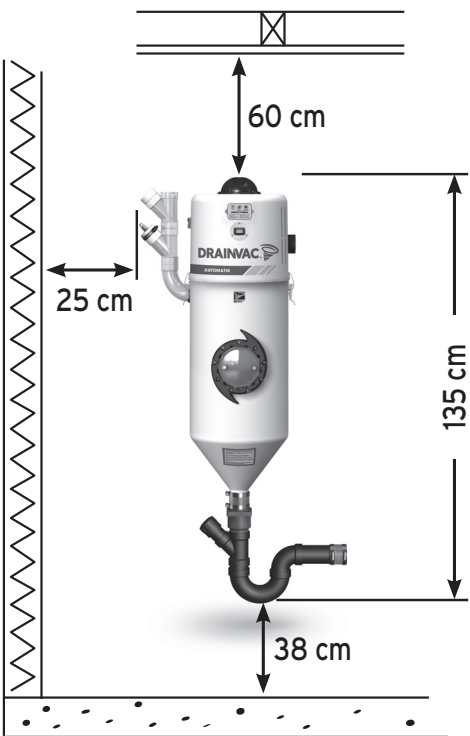


We recommend installing the system on the **lowest level of the building** to avoid having to work against gravity. The basement is generally the most ideal location, **near the building's main drainpipe**. A cold water pipe must also be available and connected to the unit. If there is no basement, the garage or a storage room will do.

If your home includes a septic tank, the unit must be higher than the drain.



It is important to install the unit in a location where it will be easily accessible for maintenance and to effectively evacuate the waste. The following is the **minimum spacing** recommended:

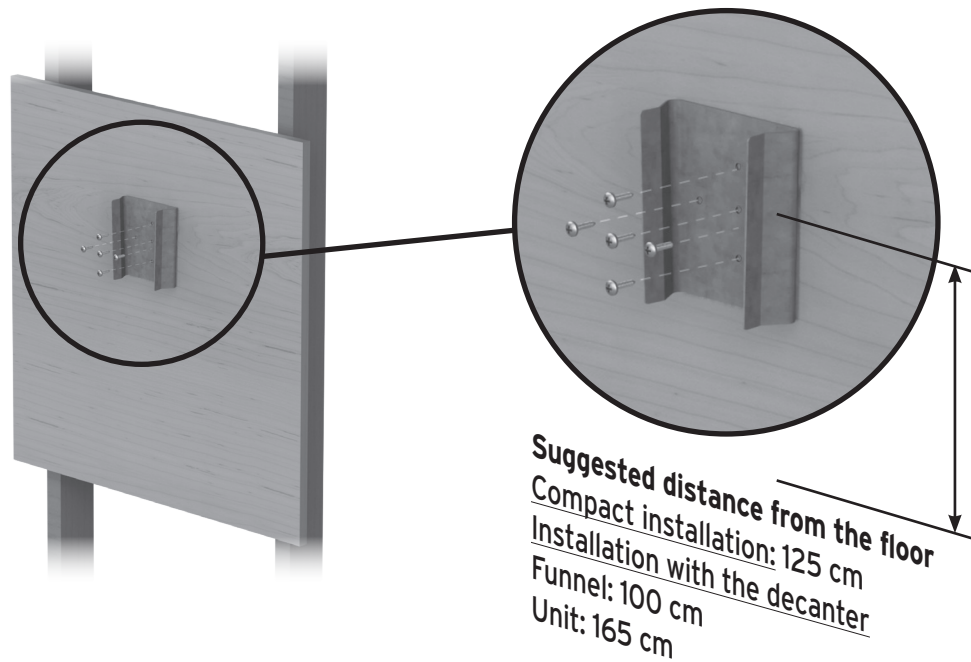


INSTALLING THE UNIT - STEP SEQUENCE -

1) MOUNTING THE UNIT

- Attach the bracket to the wall with the 5 screws supplied with the unit.

If the wall includes wall studs covered with gypsum board, **we recommend installing a wooden panel screwed to the wall studs beforehand** for more stability.



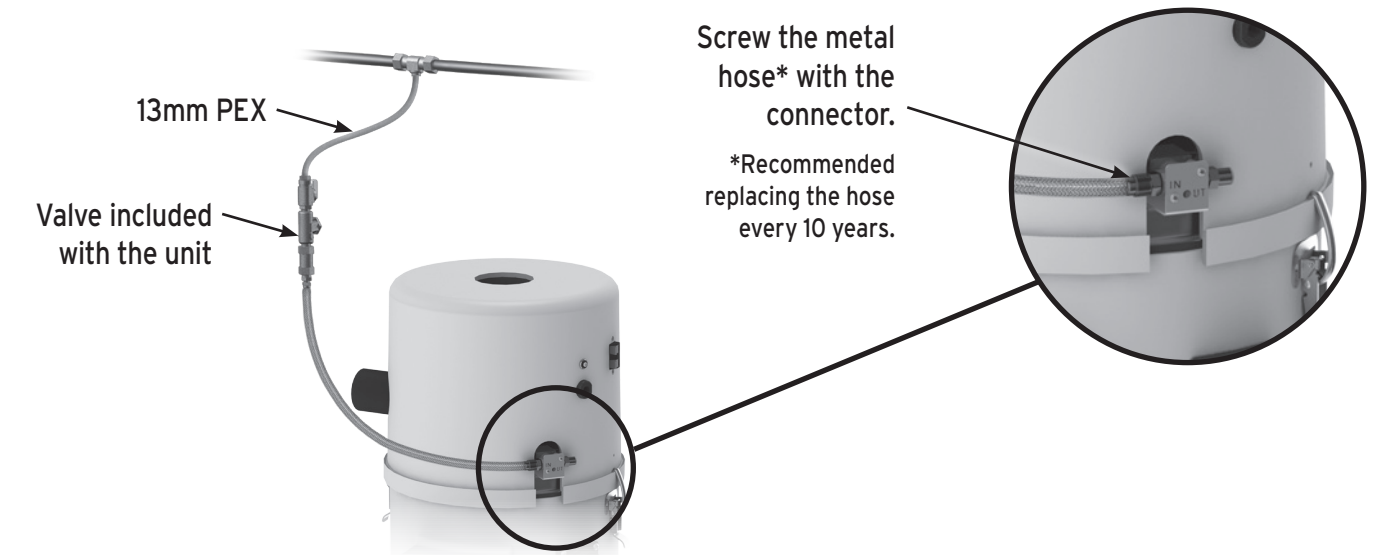
- Lift the unit to slide it in the wall support.



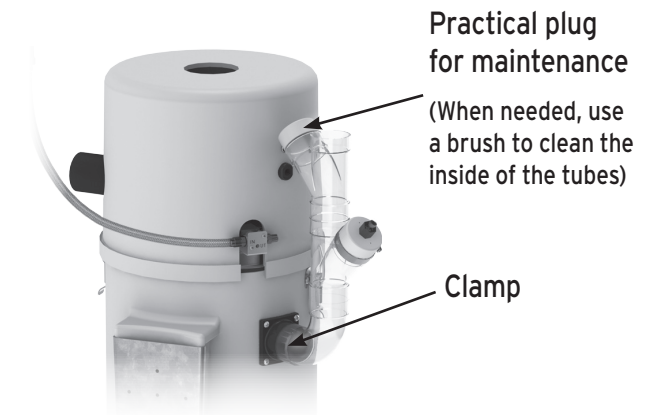
INSTALLING THE UNIT - STEP SEQUENCE -

2) CONNECT THE DUST AND WATER INLETS

- Connect the building's cold water supply to the unit's water inlet.



- Connect the dust inlet (transparent tubes) to the unit securing it with a clamp.
 * N.B. The tubes have been pre-assembled by pressure. **Do not use glue.**



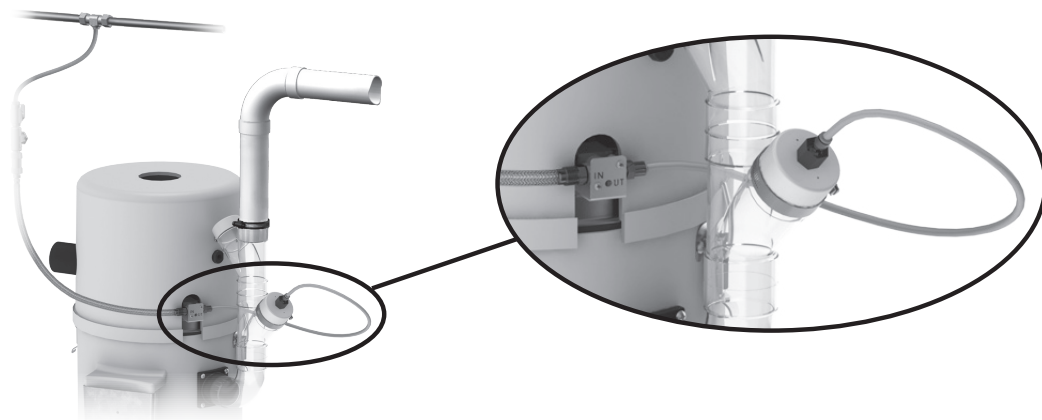
- Connect the suction hose to the unit's dust inlet, securing it with a clamp.



INSTALLING THE UNIT - STEP SEQUENCE -

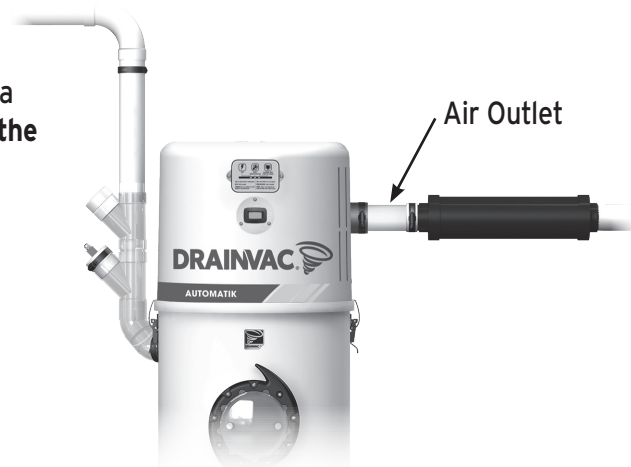
3) CONNECT THE WATER OUTLET

- Connect the unit's water outlet to the water hoses linked to the water injectors.



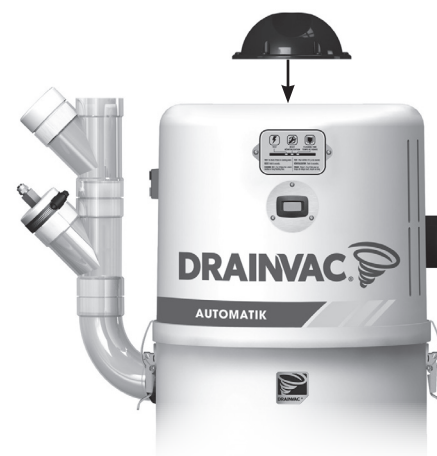
4) CONNECT THE AIR OUTLET

- Connect the air outlet to the unit, securing it with a clamp (do not glue). An air outlet leading outside the building is mandatory for all Automatik systems.



5) ADD THE AUDIOPROTEK MUFFLER

- Instructions on how to assemble the Audioprotek muffler is included on a sheet inside the packaging.



INSTALLING THE UNIT - STEP SEQUENCE -

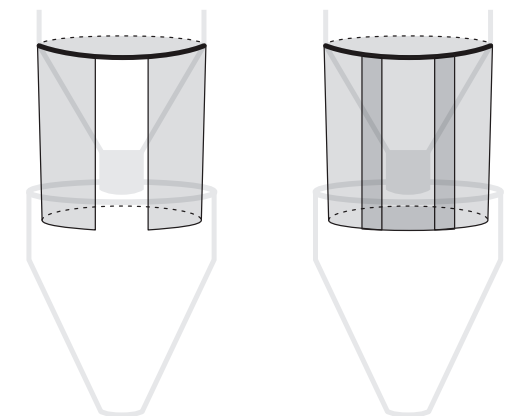
6) DECANTER OPTION: ASSEMBLE THE DECANTER

- Screw the metal rod in the centre of the decanter until it seats the bottom. Place the decanter in the funnel of the unit.



PLACE THE SKIRT

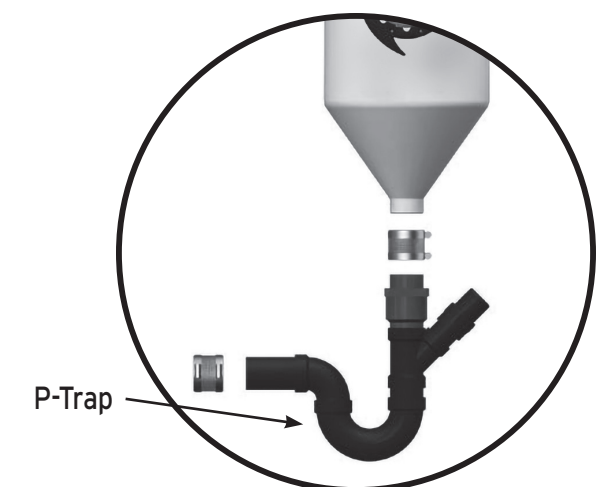
- The anti-splatter skirt carries 2 pieces; one which generally stays put onto the main body and a second that serves as a door. Place the bigger part first, followed by the smaller skirt so that it covers the opening created by the first skirt. Make both pieces fall into the funnel.



7) OPTIONAL: CONNECTING THE WASTEWATER PIPE

If you intend to connect the central vacuum to the main pipe drain, it is crucial to install a p-trap and a vent to the venting pipe.

*The drain pipe must be ABS and either 50 mm or 76 mm in diameter.



INSTALLING THE PIPING SYSTEM

The following pages illustrate piping diagrams, typical installations and the parts that we recommend for the optimum performance of your central vacuum system.

GENERAL INFORMATION

- An air outlet leading to outside **must always be installed on your unit**. Make sure that the **evacuated air does not lead under a carport**.
- If your unit includes two motors, it is important to use metal piping and couplings for the air outlet.
- To determine where to locate the wall inlets, use the length of the vacuum hose as a basis, measuring the furthest point from the wall where the wall inlets are to be installed. Do the same for all the wall inlets until all areas of the house or building can be reached with the vacuum hose, by moving it from one wall inlet to another; **don't forget to install one in the garage or outside to vacuum your car**.
- If your walls are made of gypsum board, **never install a wall inlet in the centre of the wall**. Drill the holes for the wall inlets close to a wall stud or a door frame.
- Any screw length can be used if you install the piping as illustrated in **Figure A**.
- If you install the piping as illustrated in **Figure B**, make sure to position the small screw in the right place to avoid that a longer screw goes through the piping.
- Always use a short elbow when connecting the wall inlets (**Figures A and B**) to prevent long objects (for example, a pencil) that may have been vacuumed by mistake from blocking the piping further on.

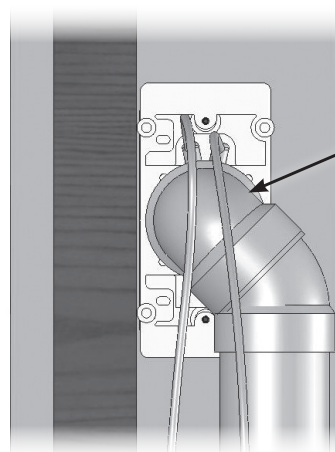


Figure A

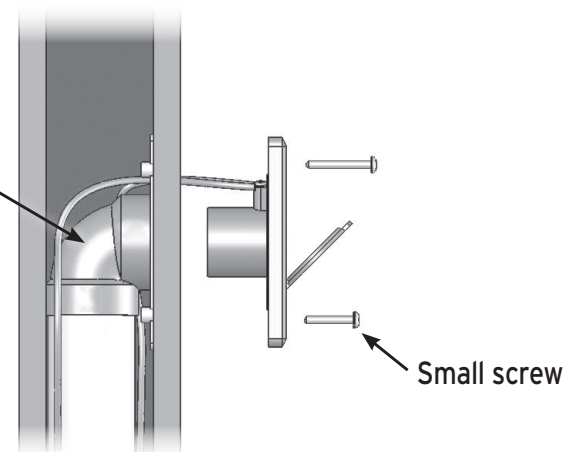
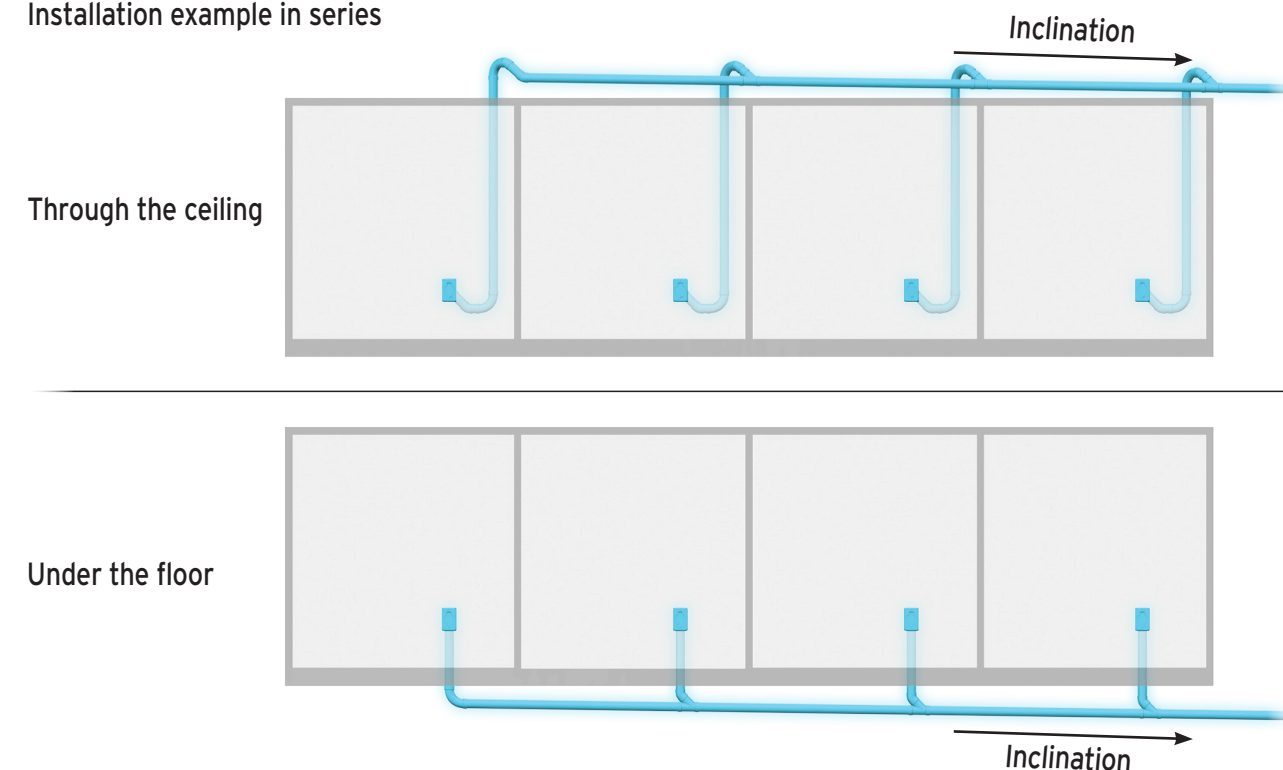


Figure B

INSTALLING THE PIPING SYSTEM

DIAGRAM OF A COMMERCIAL INSTALLATION

Installation example in series



Always have a slight inclination of the piping towards the unit.

FROM DRY TO WET

If you wish to replace your conventional (dry) vacuum to an Automatik system, please follow the instructions below.

- The Automatik system must be installed near the sanitary sewer. If your previous unit was placed at one end of the building, but the sewer is at the other end, the unit must be reinstalled at a closer range of the main drain and the pipeline must change its direction as well (Figure E). This prevents unwanted dust to cling onto the pipe which eventually clogs the duct.
- The pipes leading upwards must be slightly higher than the main pipeline to prevent liquids from flowing back down (Figure C).
- If short elbows were used to mount the pipeline, these must be taken off. The minimum cornering pipe must be at least a medium elbow, but a 45° pipe is recommended for all corners for an optimal efficiency.
- The inclination of the main pipeline must tilt a little more than an ordinary vacuum to facilitate the flow of the liquids (refer to previous page).
- Do not forget to replace the inlet with a p-trap to prevent water backflow.

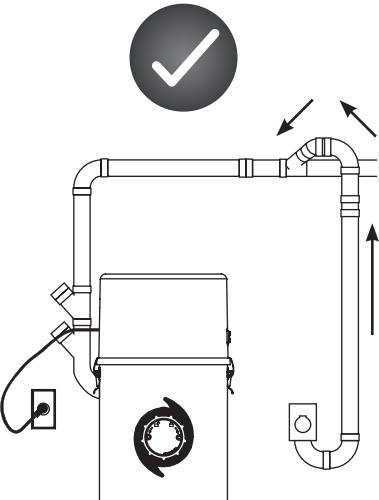


Figure C

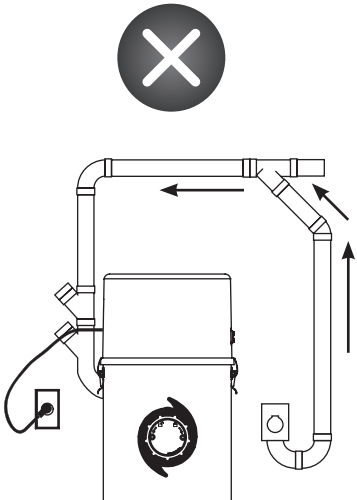


Figure D

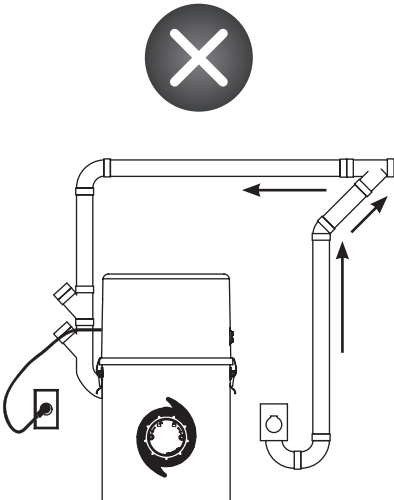


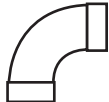

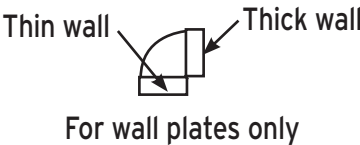



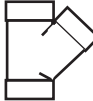

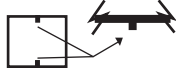
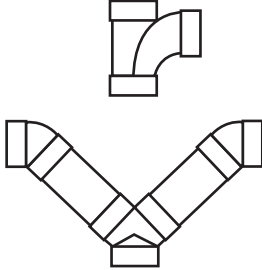
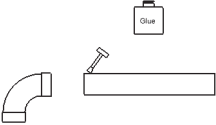
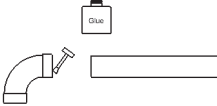
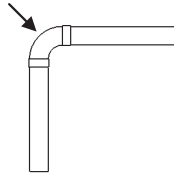
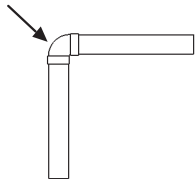
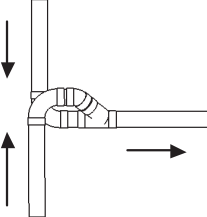
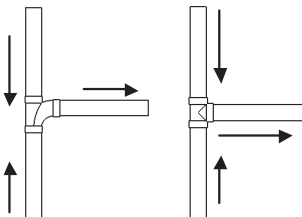
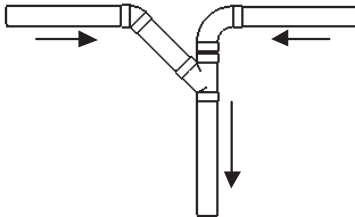
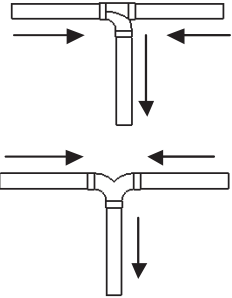
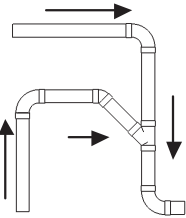
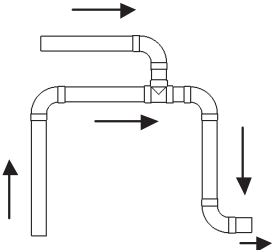


Figure E


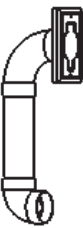
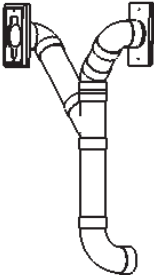
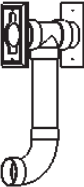
EXAMPLES OF PROPER AND IMPROPER INSTALLATIONS

	
	
 Thin wall Thick wall For wall plates only	
	
	
	
Joint with inside stoppers	Smooth joint without inside stoppers

EXAMPLES OF PROPER AND IMPROPER INSTALLATIONS

✓	✗
	
	
	
	
	

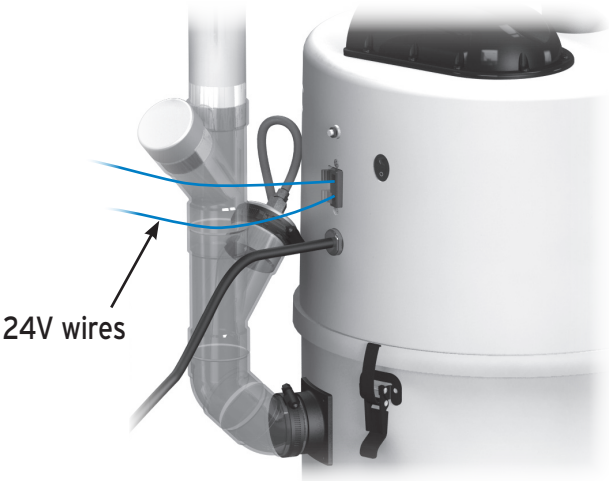
EXAMPLES OF PROPER AND IMPROPER INSTALLATIONS

✓	✗	✓	✗
			
✓			
✓			
✗			

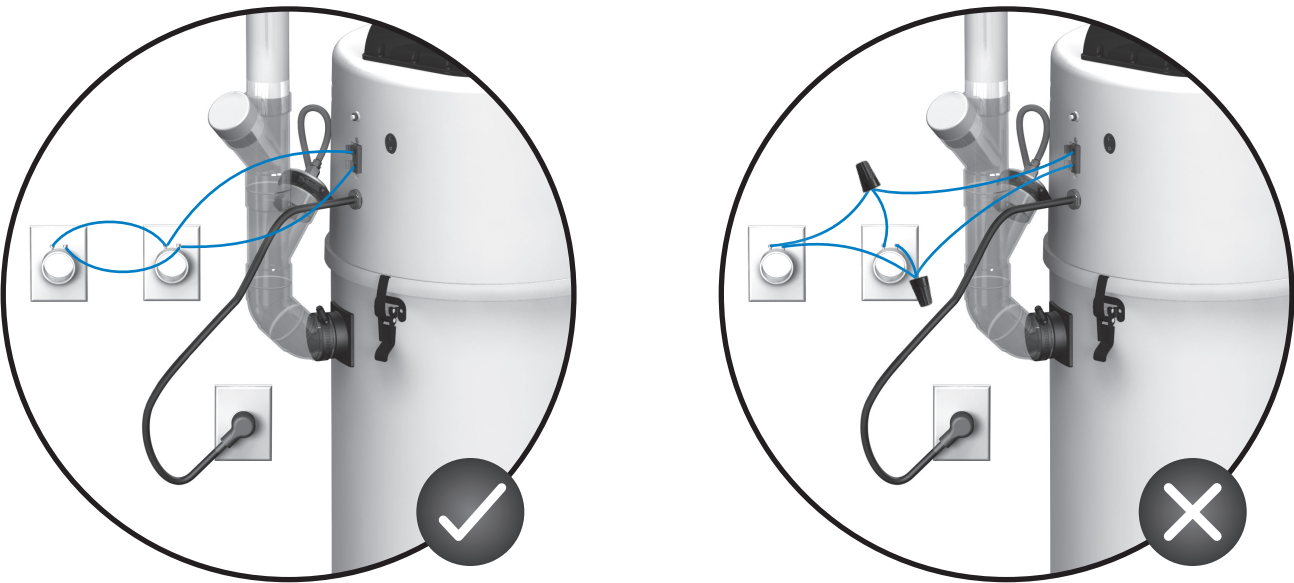
All of the central vacuum system models in this manual are equipped with an electrical cord. An adequately powered electrical outlet must be installed near the unit. **A dedicated electrical circuit must be used for the unit.** Refer to the next page for a detailed diagram of the appropriate connections for your model.

CONNECTION PROCEDURE

- Install the 24V wires from the network (each wall inlet) to the unit.
- Connect the unit to the electrical outlet with the power-supply cord.
- The vacuum cleaner is now ready to be used.

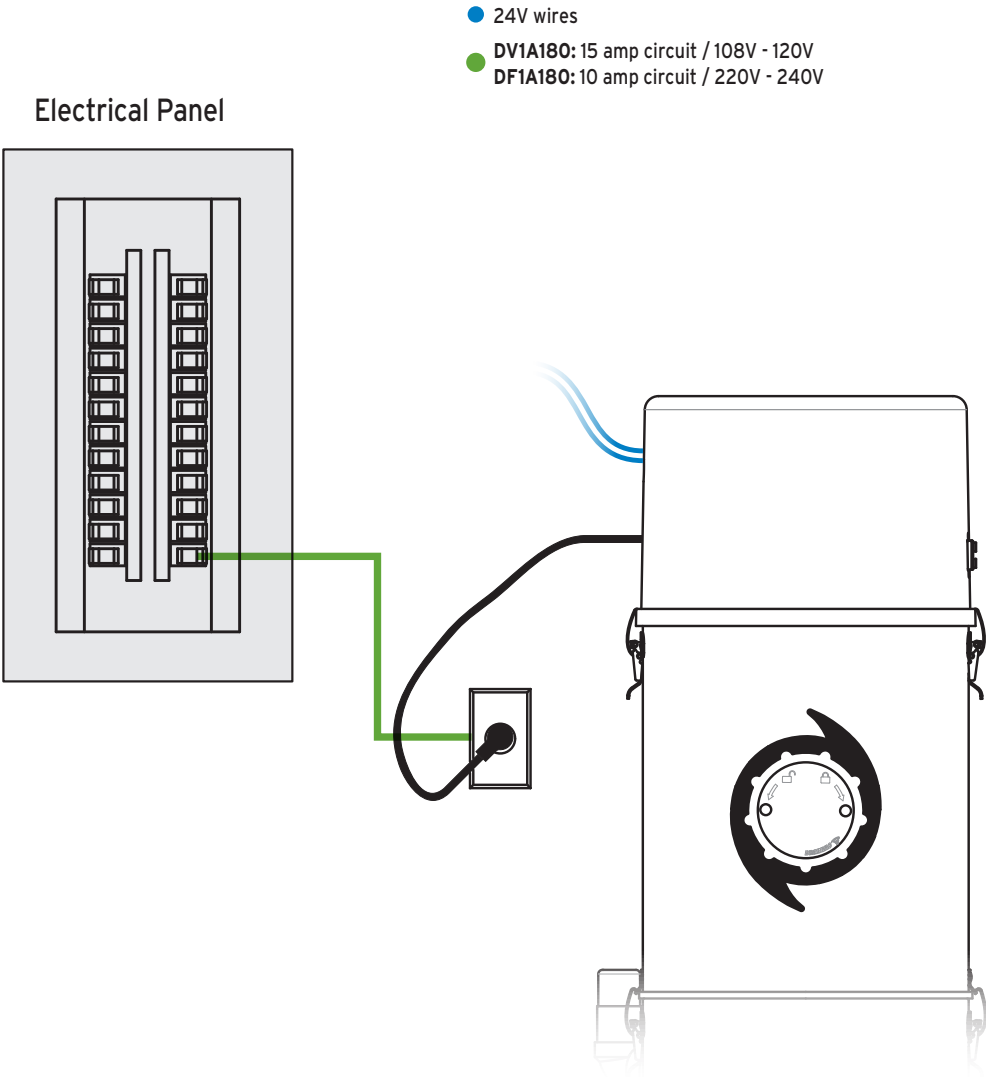


EXAMPLES OF PROPER AND IMPROPER INSTALLATIONS



DIAGRAMS OF AN APPROPRIATE CONNECTION

If you experience voltage surge problems on your electrical circuit in spite of adequate connections, a high magnetic circuit breaker can be installed on your electrical panel. Contact an electrician for more information.



GROUNDING INSTRUCTIONS

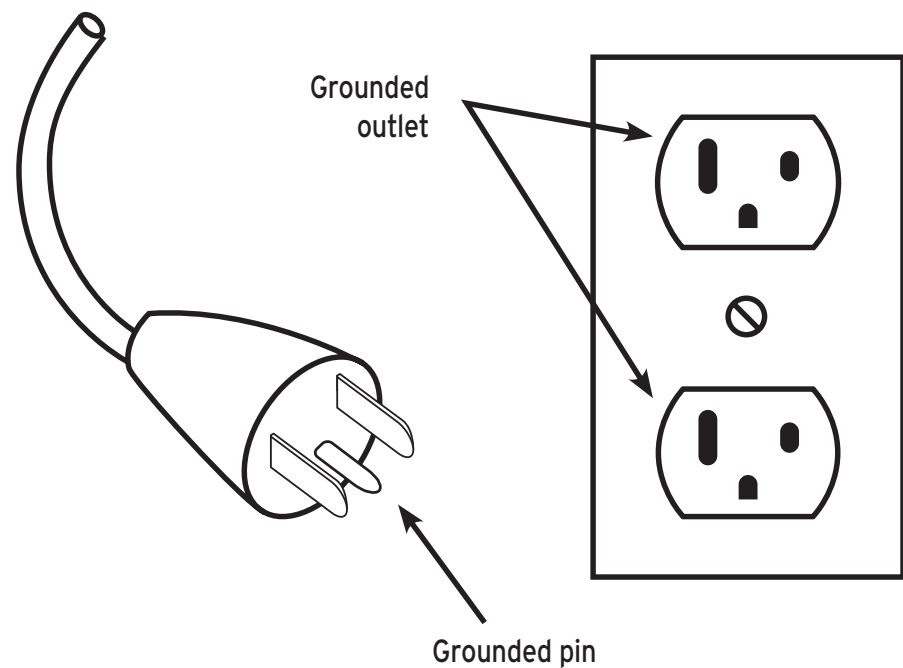
These units must be grounded. If it should malfunction or breakdown, grounding provides a path of least resistance for electric current to reduce the risk of electric shock. This appliance is equipped with a cord having an equipment-grounding conductor and grounding plug. The plug must be inserted into an appropriate outlet that is properly installed and grounded in accordance with all local codes and ordinances.

WARNING - Improper connection of the equipment-grounding conductor can result in a risk of electric shock. Check with a qualified electrician or service person if you are in doubt as to whether the outlet is properly grounded.

**DO NOT MODIFY THE PLUG PROVIDED WITH THE UNITS
IF IT DOES NOT FIT THE OUTLET,
HAVE A PROPER OUTLET INSTALLED BY A QUALIFIED ELECTRICIAN.**

These units are for use on a nominal 220V - 240V circuit and has a grounding attachment plug that looks like the one illustrated below. Make sure that the electrical cord is connected to an outlet having the same configuration as the plug.

NO ADAPTOR SHOULD BE USED WITH THIS APPLIANCE.



*Illustration of a north-american electrical outlet

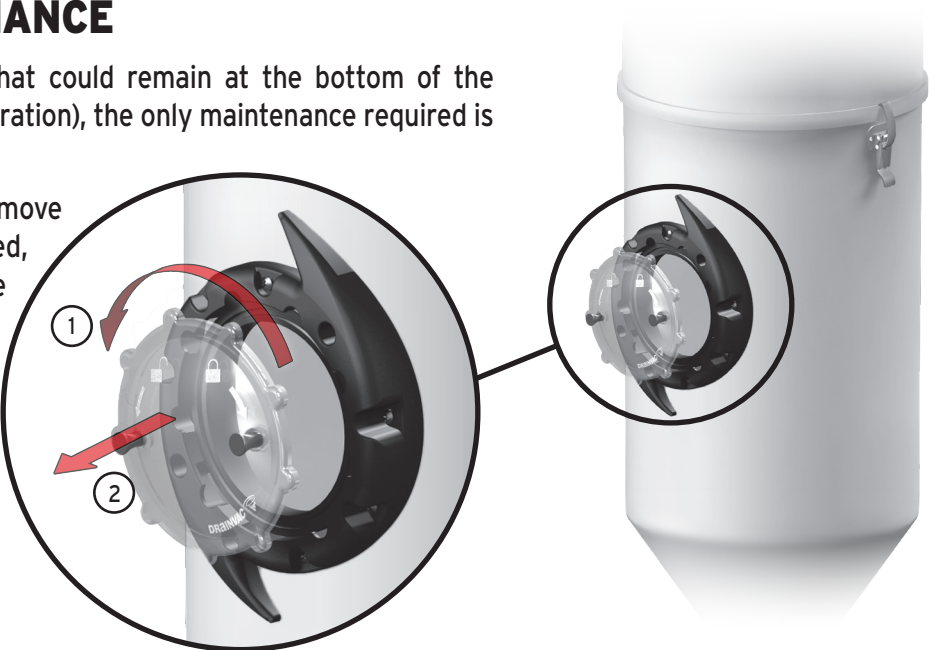
VISUAL INSPECTION

Your Automatik system is very user-friendly and **we recommend a visual inspection through the porthole once a year or when needed.** If you wish to clean the inside of the unit, refer to the following section "Regular Maintenance".

REGULAR MAINTENANCE

Except for removing objects that could remain at the bottom of the funnel (for the decanter configuration), the only maintenance required is cleaning the inside of the unit.

To proceed, you just have to remove the porthole glass as illustrated, by pivoting it in an anti-clockwise motion using the handles.



Use a scouring sponge to **especially clean the protective screen, the two electrodes** and, if needed, the funnel.

A blocked protective screen could reduce the unit's performance and dirty electrodes could not adequately send a signal to the unit to pass on to the wastewater evacuation cycle.

At the same time, it is recommended to **visually inspect** the water inlet pipe and the rubber hand to make sure that no foreign object is obstructing the water flow.



MOTOR BRUSHES

Any mechanical system requires a minimum maintenance and your system is no exception to the rule. We therefore recommend that you **inspect your motor brushes after 500 hours of use** to check how worn they are and replace them if need be. On average, this inspection should occur once every 5 to 7 years for residential applications and once or twice a year for commercial applications.

When the time comes, contact your retailer or distributor for this maintenance procedure.

WEEE GUIDELINES

This unit complies with the **WEEE (Waste Electrical and Electronic Equipment) Guidelines**, which promote the recycling of this type of waste equipment and encourage the development of products that are adapted to efficient waste reclamation at the end of their life cycle.

The WEEE Guidelines stipulate that the original supplier should agree to reclaim any obsolete equipment free of charge. We recommend that you advise your supplier that you would like him to reclaim your unit when you order and replace it with a new one.

Do not discard the unit with your regular garbage. The symbol representing a garbage bin on wheels on the unit's label (**Figure F**) attests to this requirement. You must ensure that, at the end of its life cycle, your unit is reclaimed, treated and recycled by an authorized firm.

For more information, contact your municipal waste management department.



The acquirer of the Automatik system is committed to respect the environmental regulations of the liquid and solid waste disposal in the public water system.

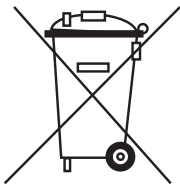


Figure F

THE UNIT WON'T START UP...

SOLUTION:

- Check the circuit breaker in your electrical panel.
- Check the unit's circuit fuse/breaker.
- Check the 24V circuit, as follows:

Try to establish electrical contact in a wall inlet with a metal object (for example, a coin).

- If the unit starts up, the suction hose is defective.
- If the unit doesn't start up, check to see if the 24V wires are properly connected to the unit.

Try to establish an electrical contact between the two terminals of the 24V circuit on the unit with a metal object (for example, a screwdriver).

- If the unit starts up, a 24V wire is either cut or disconnected from one of the wall inlets.
- If the unit won't start up after these steps, the printed circuit is defective.

THE UNIT WON'T SHUT DOWN...

SOLUTION:

Check the 24V circuit as follows:

Disconnect one of the two wires on the unit's 24V circuit.

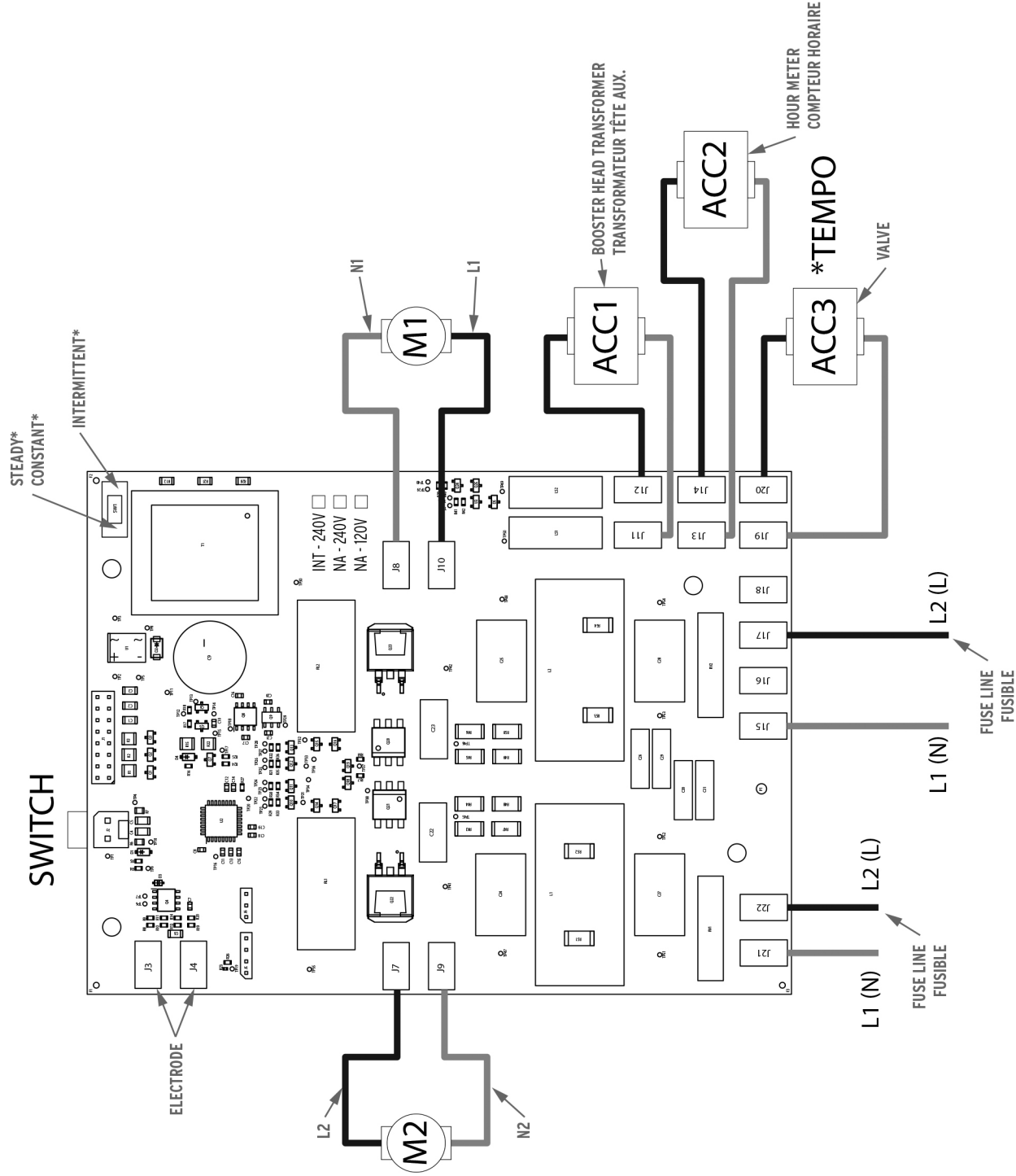
- If the unit shuts down, the problem could be that two 24V wires are touching themselves somewhere or that the wall inlet is defective.
- If the unit doesn't shut down, the printed circuit is defective. Unplug the power cord.

SUPPORT

If you wish to speak with a customer service representative, please contact your supplier/dealer.

To find a retailer near you, please visit our website: www.drainvac.com/ca/en/retailers/find-a-retailer/

SWITCH



*STEADY: COMMERCIAL DEFAULT SETTING - CONTINUOUS WATER FLOW

*INTERMITTENT: RESIDENTIAL DEFAULT SETTING - INTERMITTENT WATER FLOW

*CONSTANT: CONFIGURATION PAR DÉFAUT POUR LE COMMERCIAL - ÉCOULEMENT D'EAU CONTINUE

*INTERMITTENT: CONFIGURATION PAR DÉFAUT POUR LE RÉSIDENTIEL - ÉCOULEMENT D'EAU PAR INTERMITTENCE

